

State of Wyoming Corner Record

(In compliance with the *CORNER PERPETUATION AND FILING ACT*, Wyoming Statutes, 1977, Section 36-11-101, et. seq., and the Rules and Regulations of the Board of Registration for Professional Engineers and Professional Land Surveyors)

Reverse side of this form may be used if more space is needed.

Record of original survey and citation of source of historical information (if corner is lost or obliterated). Description of corner monumentation evidence found and/or monument and accessories established to perpetuate the location of this corner. Sketch of relative location of monument, accessories, and reference points with course and distance to adjacent corner(s) (if determined in this survey). Method and rationale for reestablishment of lost or obliterated corner.

G.L.O. Notes: U.S. Deputy Surveyor, John B. Thomas, September 15, 1870; 80.00 Chains... Set Granite Boulder 18 x 10 x 7 for Corner to Sec's 11, 12, 13 & 14.

Subsequent Record: Laramie County Engineers Office, Laramie County Road C.R. 5-87, Laramie County Roads Field Book No. 11, Page 56, circa October 12, 1924, indicates "NW Cor 13-15-67 Stone in place Burried Same Set WCCR NE 45° 56.4' SE 45° 56.4'".

Found: Two stones, firmly set and marked "WCCR" NE @ 56.4' and SE @ 56.4' from the found original stone which was buried approximately 0.5' below normal ground.

Set: In the buried original stone I drilled a 5/8 inch hole and set in anchor cement a magnet and 2" Brass Tablet. Set a 5' steel fence post witness 1' north.

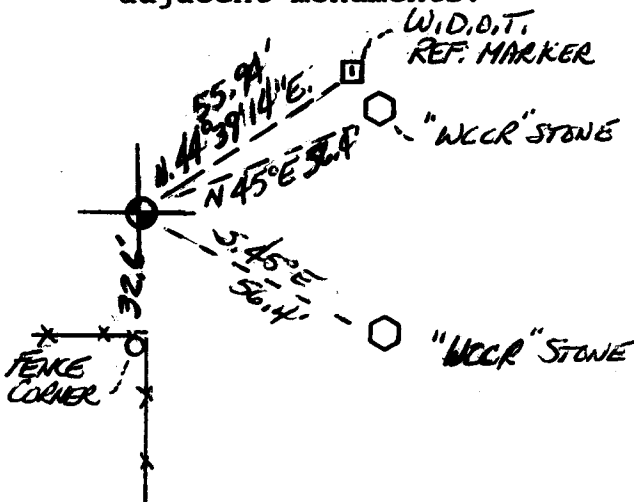
Brass Tablet Markings

1996
T15N $\frac{11}{14}$ | $\frac{12}{13}$ R
W
PLS 2927

LARAMIE COUNTY CLERK
CHEYENNE, WY.
'96 MAR 1 PM 12 14

178473

See back of this sheet for ties to adjacent monuments.



Sketched Reference Point Ties To Corner

Date of Field Work: 30, Jan., 1996 Office Reference: Job No. 2-1930.95

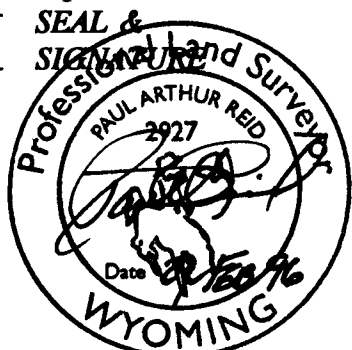
CROSS INDEX DIAGRAM

A	1	2	3	4	5	6	7	8	9	10	11	12	13	14	15	16	17	18	19	20	21	22	23	24	25	26	27	28	29	30	31	32	33	34	35	36	B			
C	6	5	4	3	2	1																																	D	
E	7	8	9	10	11	12																																	F	
G	18	17	16	15	14	13																																	H	
I	19	20	21	22	23	24																																	J	
K	30	29	28	27	26	25																																	L	
M	31	32	33	34	35	36																																	N	
O																																							P	
Q																																							R	
S																																							T	
U																																							V	
W																																								X
Y																																								Z

Firm/Agency, Address
Paul A. Reid, A.V.I.p.c.
2035 Westland Road
Cheyenne, WY 82001

Telephone Number:
(307)-634-6017

This corner record was prepared by me or under my direction and supervision.



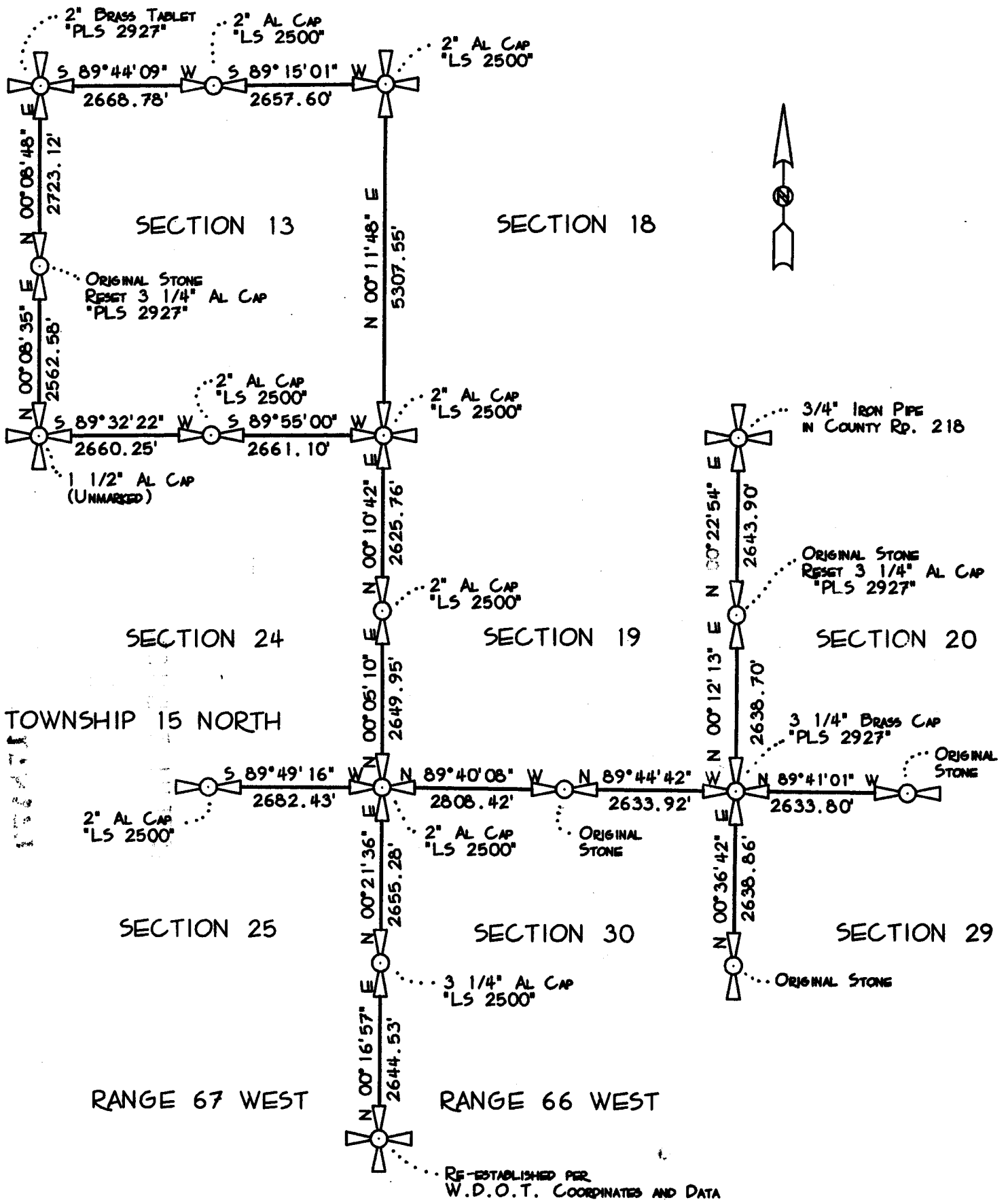
Corner Name: NW cor Section: 13 T 15N R 67W;6TH P.M. Cross-Index No.: J-21

SBRPEPLS/PLSW: March 1994

BOOK 1418

1367

BASIS OF BEARINGS: BEARINGS ARE GRID AND BASED UPON THE USE OF THE TRIMBLE GPS TOTAL STATION SYSTEM AND WGS 84 DATUM. THE ORIGIN BEING LOCATED @ A LOCAL CONTROL POINT BEING A 1 1/2" ALUMINUM CAP MARKED "CP WARREN" AT 41° 15' 28.68311"N LATITUDE AND 104° 49' 23.61968"W LONGITUDE AND BEING APPROXIMATELY 1,320' SOUTH AND 1340' EAST OF THE NW CORNER OF SECTION 19, T. 15N., R. 66W., 6TH P.M.



SCALE 1" = 2000'